

SCX ■Series

SCX550E

SCX700E

SCX800E

CRAWLER CRANE



- We are constantly improving our products and therefore reserve the right to change designs and specifications without notice.
- Units in this catalog are shown under International System of Units (SI). The figures in parenthesis are under the older British Gravitational System of Units.
- Illustrations may include optional equipment and accessories, and may not include all standard equipment.

Address inquires to :

**Hitachi Sumitomo Heavy Industries
Construction Crane Co., Ltd.**

9-3, Higashi-Ueno 6-chome, Taito-ku, Tokyo 110-0015, Japan
Phone: 81-3-3845-1387 Facsimile: 81-3-3845-1394
<http://www.hsc-crane.com>

HITACHI SUMITOMO

REFINED, SIMPLE

SCX550E / SCX700E / SCX800E

A design that is committed solely to "lifting". Cranes with basic functions that are easily accessible present a major advantage for even the most difficult jobs. Hitachi Sumitomo has developed a completely new crawler crane line-up that makes these unique concepts a reality. Superb, powerful lifting performance. High-quality and refined design. High-reliability with time-tested components. Low-maintenance with straightforward mechanisms. The SCX E series offers performance with an air of sophistication and simplicity that works wonders on any site. Introducing the true high-performance crane, capable of completing any job the world over.



Photo: SCX700E

Photo: SCX800E

Photo: SCX550E

PERFORMANCE

Suited for a brand range of work types

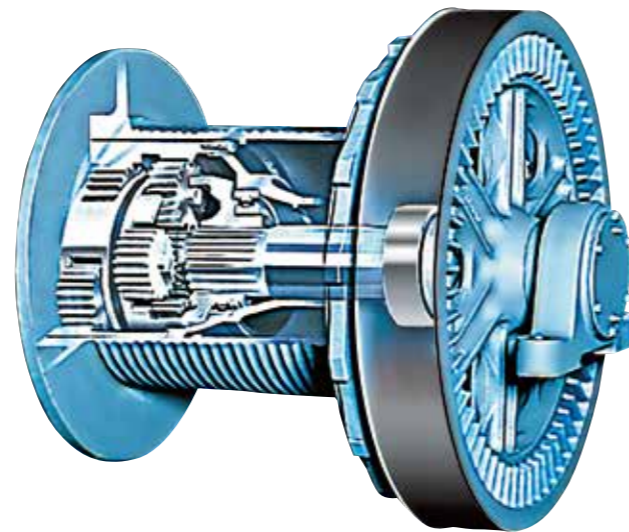
A winch with free-fall function with smooth brake operation is included as standard. In addition to standard crane operations, the powerful winch is suited to a broad range of work types such as foundation and civil engineering work, or clamshell bucket operations used at harbors.



Drum with integrated reduction gear (winch with free-fall function)



Winch with free-fall function (brake pedals)



SAFETY

Exceptional safety

In addition to the moment limiter designed to assist with safe crane operation, an anti-two block for the hook and boom and auto-drum lock for the boom hoist winch are equipped as standard. This full range of other safety devices essential for a crawler crane ensure peace of mind in many different working conditions.



The high-visibility multifunctional moment limiter can be set easily with an interactive interface



A gate lock lever keeps the crane safe against accidental operations



Secondary boom hoist limiting device that cannot be released by the operator

Simply sophisticated, for any job site. Bringing new meaning to user-friendliness and reliability.

OPERABILITY

Superb control

The large front window and sunroof help to enhance visibility for the operator. The spacious 1040 mm wide cab features a simple and easy-to-use lever layout with a comfortable operator's seat to ensure a superb level of operation and control. Equipment such as full-auto air-conditioner and AM/FM radio are also included to make the cab more comfortable.



Full-auto air-conditioner (with heater and cooler box, uses substitute chlorofluorocarbon)



RELIABILITY

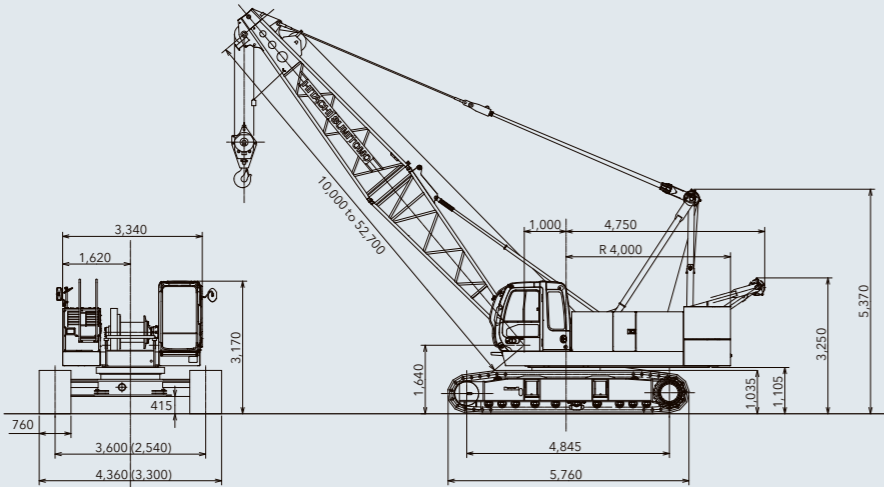
Sure-footed reliability

Hitachi Sumitomo cranes are developed and produced under tough quality controls measures, while proven simple hydraulic and electrical systems have been used. This combination prevents unwanted machine problems and other downtime to deliver exceptional reliability. The control system also uses relay circuits to make maintenance easier.

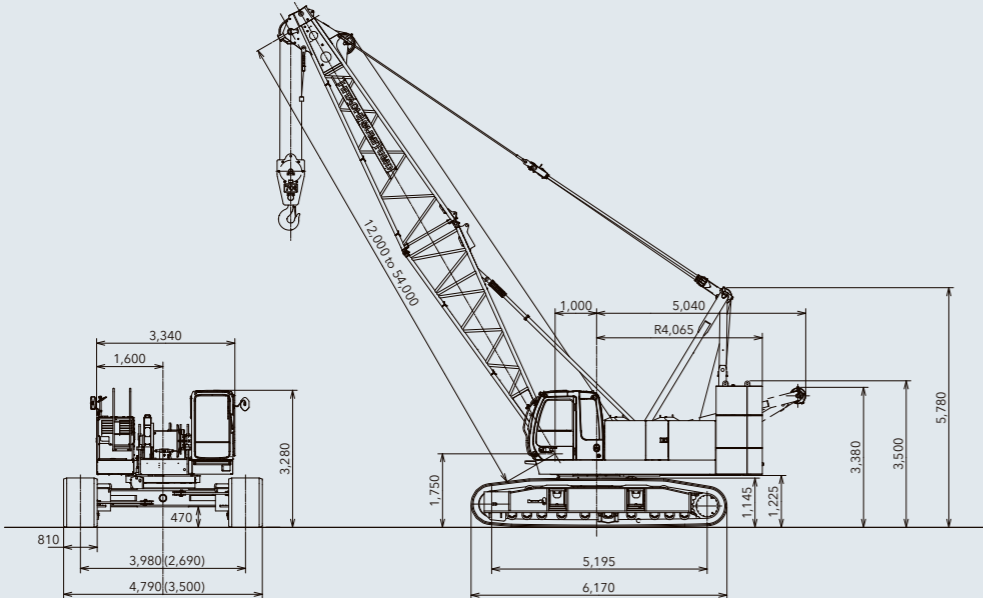


■ GENERAL DIMENSIONS

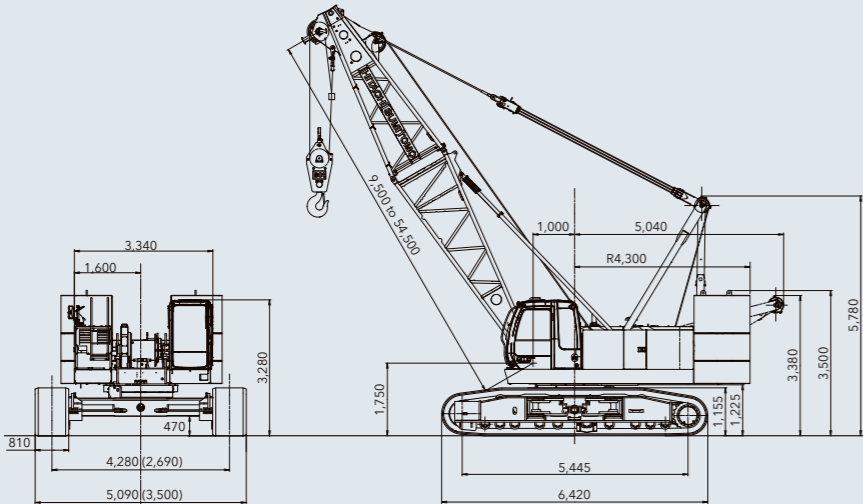
SCX550E



SCX700E



SCX800E



■ SPECIFICATIONS

SCX550E

			Liftcrane		Clamshell			
Max. lifting capacity			t × m		55 × 3.7		—	
Basic boom length			m		10.0		10.0	
Max. boom length			m		52.7		19.15	
Crane jib length			m		6 to 15		—	
Max. boom + Jib length			m		43.55 + 15		—	
Rope line speeds (*1)	Front and rear winch	m / min	75 ^(*2) 60 ^(*3)	Wire rope diameter 22 mm	75 ^(*2)	Wire rope diameter 22 mm		
	Boom hoist winch	m / min	62 ^(*2)		Wire rope diameter 16 mm	62 ^(*2)	Wire rope diameter 16 mm	
Swing speed ^(*4)			min ⁻¹ (rpm)		3.7 (3.7)			
Travel speed ^(*5)			km / h		1.5			
Engine	Make and model		ISUZU 6HK1 Stage II, Tier 2					
	Rated output		kW / min ⁻¹ (PS / rpm)		140 / 2,000 (190 / 2,000)			
Gradeability			%(°)		30 (17)			
Ground contact pressure			kPa (kgf / cm ²)		67.0 (0.68) (w / basic boom, 55 t hook)		70.5 (0.72) (w / basic boom and 1.2 m ³ Clamshell bucket)	
Operating weight			t		50.0 (w / basic boom, 55 t hook)		52.6 (w / basic boom and 1.2 m ³ Clamshell bucket)	

SCX700E

			Liftcrane		Clamshell		
Max. lifting capacity			t × m		70 × 3.7		—
Basic boom length			m		12.0		12.0
Max. boom length			m		54.0		18.0
Crane jib length			m		9 to 18		—
Max. boom + Jib length			m		45 + 18		—
Rope line speeds ^(*1)	Front and rear winch	m / min	75 ^(*2) 60 ^(*3)	Wire rope diameter 22 mm	75 ^(*2)	Wire rope diameter 22 mm	
	Boom hoist winch	m / min	62 ^(*2)	Wire rope diameter 16 mm	62 ^(*2)	Wire rope diameter 16 mm	
Swing speed ^(*4)			min ⁻¹ (rpm)		3.0 (3.0)		
Travel speed ^(*5)			km / h		1.3		
Engine	Make and model		ISUZU 6HK1 Stage II, Tier 2				
	Rated output		kW / min ⁻¹ (PS / rpm)		140 / 2,000 (190 / 2,000)		
Gradeability			%(°)		30 (17)		
Ground contact pressure			kPa (kgf / cm ²)		75.5 (0.77) (w / basic boom, 70 t hook)		78.5 (0.80) (w / basic boom and 1.2 m ³ Clamshell bucket)
Operating weight			t		64.8 (w / basic boom, 70 t hook)		67.3 (w / basic boom and 1.2 m ³ Clamshell bucket)

SCX800E

			Liftcrane		Clamshell		
Max. lifting capacity			t × m		80 × 3.2		—
Basic boom length			m		9.5		9.5
Max. boom length			m		54.5		18.0
Crane jib length			m		9 to 18		—
Max. boom + Jib length			m		45.5 + 18		—
Rope line speeds ^(*1)	Front and rear winch	m / min	75 ^(*2) 60 ^(*3)	Wire rope diameter 22 mm	75 ^(*2)	Wire rope diameter 22 mm	
	Boom hoist winch	m / min	62 ^(*2)		Wire rope diameter 16 mm	62 ^(*2)	Wire rope diameter 16 mm
Swing speed ^(*4)			min ⁻¹ (rpm)		3.0 (3.0)		
Travel speed ^(*5)			km / h		1.3		
Engine	Make and model		ISUZU 6HK1 Stage II, Tier 2				
	Rated output		kW / min ⁻¹ (PS / rpm)		140 / 2,000 (190 / 2,000)		
Gradeability			%(°)		30 (17)		
Ground contact pressure			kPa (kgf / cm ²)		80 (0.82) (w / basic boom, 80 t hook)		83.0 (0.85) (w / basic boom and 1.2 m ³ Clamshell bucket)
Operating weight			t		72.5 (w / basic boom, 80 t hook)		74.6 (w / basic boom and 1.2 m ³ Clamshell bucket)

Notes: 1. Data is expressed in SI units followed by conventional units in ().
2. These figures are based on the drum first layer, rated engine speed and operating conditions (*1).
3. With no load (*2).
4. With 6.5 t rated line pull (*3).
5. Swing speed will vary with the load (*4).
6. Travel speed is based on flat, level and firm supporting surface, and under the conditions that no load must be applied and front attachment must be 12.0 m basic boom (*5).