

# **SCX800E**

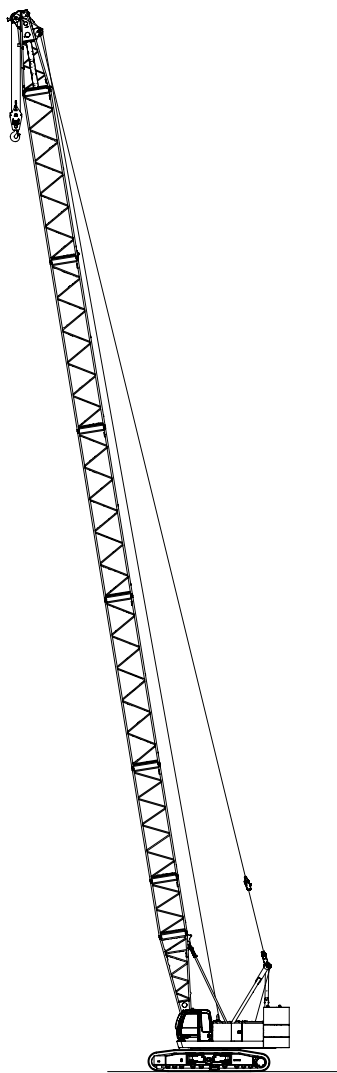
---

**HYDRAULIC CRAWLER CRANE**

## Variation of The Attachment

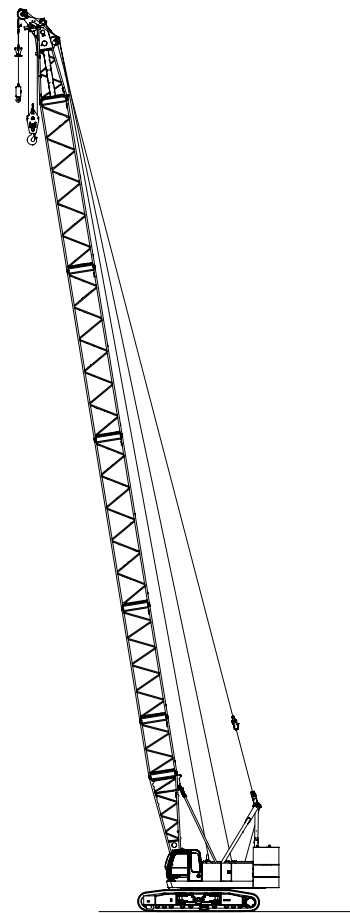
Line Speed *	Front / Rear Winch	m/min	37/75
	Boom Hoist Winch		62
Swing Speed	min <sup>-1</sup> (rpm)		3.0
Travel Speed *	km/h		1.3
Gradeability	% (Degree)		30 (17)
Engine Model			ISUZU 6HK1 (Stage II, Tier 2)
Engine Rated Output Power	kW/min <sup>-1</sup>		140 / 2,000
	(ps/rpm)		(190 / 2,000)

Note : Speeds marked with "\*" may vary depending on load applied.



**Crane Specification  
(Boom Longest Length)**

Boom Length	m	54.5
Ground Contact Pressure	kPa (kgf/cm <sup>2</sup> )	85 (0.87) Boom longest length with 15 t hook
Overall Operating Weight	t	Approximately 76.6 Boom longest length with 15 t hook



**Crane Specification  
(Boom Longest Length with Aux. Sheave)**

Boom Length	m	51.5 + Aux. sheave
Ground Contact Pressure	kPa (kgf/cm <sup>2</sup> )	85 (0.87) Boom longest length + aux. sheave, 15 t + 6.5 t hook attached
Overall Operating Weight	t	Approximately 76.7 Boom longest length + aux. sheave, 15 t + 6.5 t hook attached

## VARIATION

Variation of The Attachment	2
-----------------------------	---

## SPECIFICATIONS

Specifications	4
----------------	---

Crane Specifications	5
----------------------	---

Dimensions and Specifications	5
-------------------------------	---

Working Ranges	7
----------------	---

■ Main Boom	7
-------------	---

■ Aux. Sheave	8
---------------	---

Gross Rated Load Table	9
------------------------	---

■ Main Boom	9
-------------	---

■ Aux. Sheave	10
---------------	----

■ Main Boom with Aux. Sheave	11
------------------------------	----

Clamshell Specifications	12
--------------------------	----

Dimensions and Specifications	12
-------------------------------	----

■ Working Ranges	12
------------------	----

■ Specifications	12
------------------	----

■ Clamshell Bucket	12
--------------------	----

■ Gross Rated Load Table	12
--------------------------	----

## TECHNICAL DATA

Weights and Dimensions of Disassembled Units	13
--	----

Weights and Dimensions List	13
-----------------------------	----

Equipment List	16
----------------	----

Standard and Optional Equipment	16
---------------------------------	----

# Specifications



## Engine

Model	ISUZU 6HK1
Type	4-cycle, Water-cooled, Direct injection, Turbo-charged, Diesel engine
Displacement	7.79 liters
Rated Output	140 kW / 2,000 min <sup>-1</sup> (190 ps / 2,000 rpm)
Fuel Tank Capacity	285 liters
Notes	Engine meets Tier 2 / Stage II of engine exhaust gas emission regulations in USA, Europe, and Japan. Engine rated horsepower is based on international rating formula that includes engine alternator and without fan.



## Control

Control System	Main actuators are actuated by main hydraulic system controlled with pilot hydraulic system. Safety devices are securely operated by combined various electronic control with hydraulic system. Working speed can be precisely controlled according to control lever stroke depending on work.
Control Levers	Control levers are designed and located based on ergonomics. Control lever system is cross operation lever type.
Display Panel Design	7 inches size. Located to check work state easily without disturbing the view of the operator.



## Hydraulic System

Hydraulic Oil Tank Capacity	250 liters		
Hydraulic Pump Capacity	Max.	29.4 MPa	
	P1	230 liters / min	for Front, Rear, boom hoist winch, travel and sideframe retract
	P2	230 liters / min	for Front, Rear and travel
	P3	131 liters / min	for Swing
	P4	36 liters / min	for Pilot control



## Winch

Front and Rear Winch				
Winch		Front	Rear	
Rope Diameter		22 mm	22 mm	
Rope Length	Standard	220 m	135 m	
	Winding Capacity	320 m	320 m	
Line Pull	Rated	68 kN	68 kN	
Boom Hoist Winch				
Rope Diameter		16 mm		
Rope Length	Incorporated	150 m		
Hydraulic motor with multi-disc brakes.				



## Swing System

Constructed with a hydraulic motor with reduction gear and multi-disc brakes and a swing bearing which has inner tooth.
---



## Counter Weight

Counter Weight	Total Weight	27.9 ton
	8.5 ton Base Weight	2 pieces
	4.9 ton Insert Weight	1 piece
	6.0 ton Top Weight	1 piece



## Carbody Frame

Welded steel construction.
----------------------------

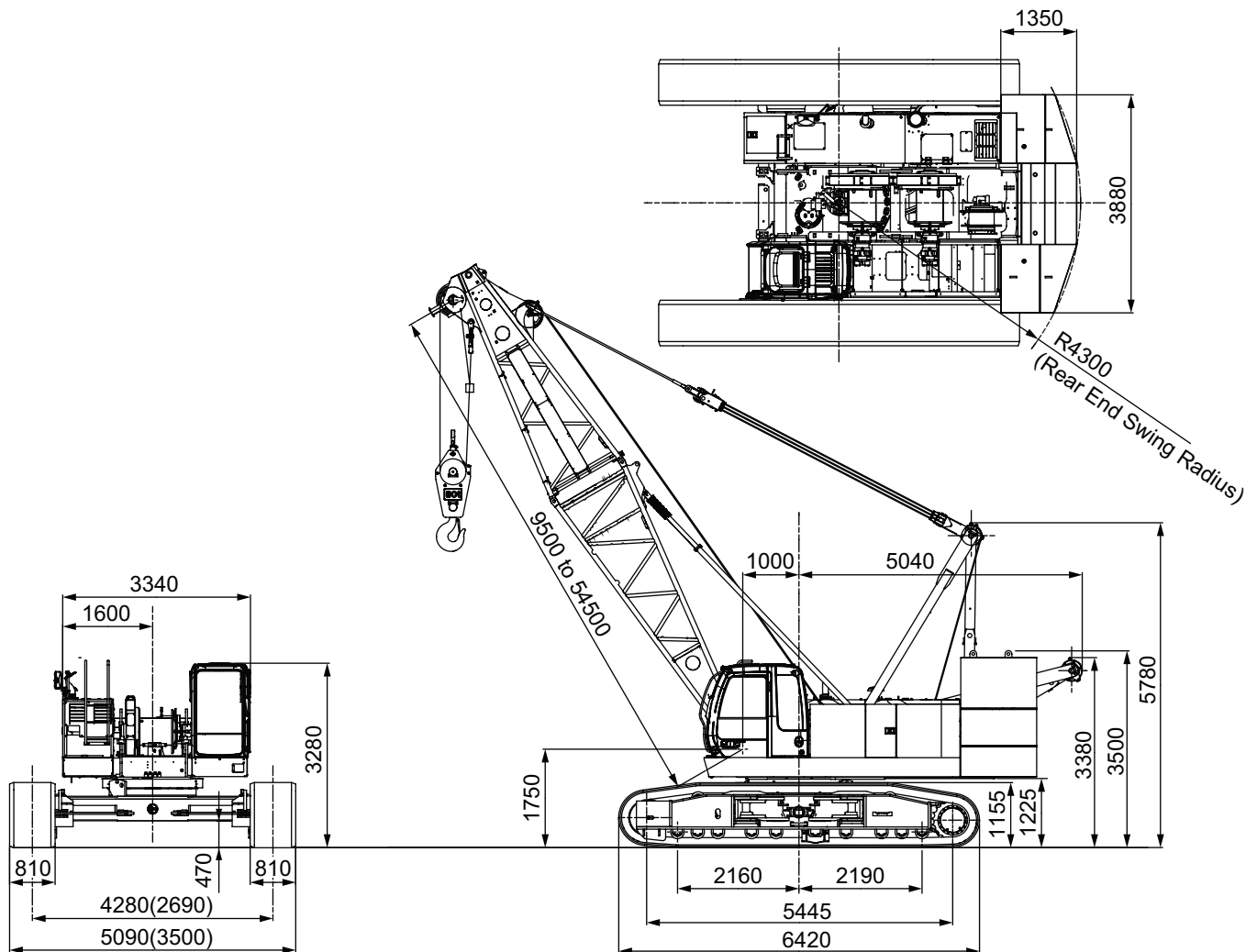


## Crawler Sideframe

Frame	Welded steel box construction and can be retracted for transportation.	
Shoe	62 track shoes with triple grousers made of induction-hardened rolled alloy. 810mm width.	
Upper Roller	2 pieces each side.	
Lower Roller	10 pieces each side.	
Travel Device	1 piece each side.	
	Hydraulic travel device (Hydraulic motor and reducer)	
	Travel speed (Gradability : 30%)	1.3 km/h

# Crane Specifications

## Dimensions and Specifications



### Crane Specifications

Max. Lifting Load × Working Radius	t × m	80 × 3.2
Basic Boom Length	m	9.5
Max. Boom Length	m	54.5
Ground Contact Pressure	kPa (kgf/cm <sup>2</sup> )	80 (0.82) 9.5m basic boom and 80t hook block
Overall Operating Weight	t	72.5 9.5m basic boom and 80t hook block

### Hook Weight

80 t	800 kg
40 t	410 kg
15 t	320 kg
7 t	180 kg

NOTE : Data is expressed in SI units followed by conventional units in ( ).

### Front / Rear Winch Rope No. of Falls and Lifting Load

Hook Capacity	Maximum Rated Load ( ton )										
	11 Falls	10 Falls	9 Falls	8 Falls	7 Falls	6 Falls	5 Falls	4 Falls	3 Falls	2 Falls	1 Fall
80 t	80	70	63	56	49	42	35	28	21	14	-
40 t	-	-	-	-	-	40	35	28	21	14	-
15 t	-	-	-	-	-	-	-	-	15	14	-
7 t	-	-	-	-	-	-	-	-	-	-	7

# Boom Standard Configurations

Boom (1/2)		Boom (2/2)	
Boom Length (m)	Boom Configurations	Boom Length (m)	Boom Configurations
9.5		33.5	
12.5		36.5	
15.5		39.5	
18.5		42.5	
21.5		45.5	
24.5		48.5	
27.5		51.5	
30.5		54.5	

## Aux. Sheave Installable Boom Length

Boom Length (m)	9.5	12.5	15.5	18.5	21.5	24.5	27.5	30.5	33.5	36.5	39.5	42.5	45.5	48.5	51.5	54.5
With Aux. Sheave	×	○	○	○	○	○	○	○	○	○	○	○	○	○	○	×

(○ : Attachable × : Not Attachable)

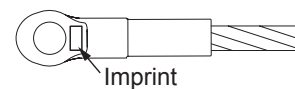
## Dimensions Not Shown In The Figure

Symbols	Boom Length (m)	Note
3	3	
6	6	
9	9	

Check the pendant rope with referring to the imprints on the rope end.

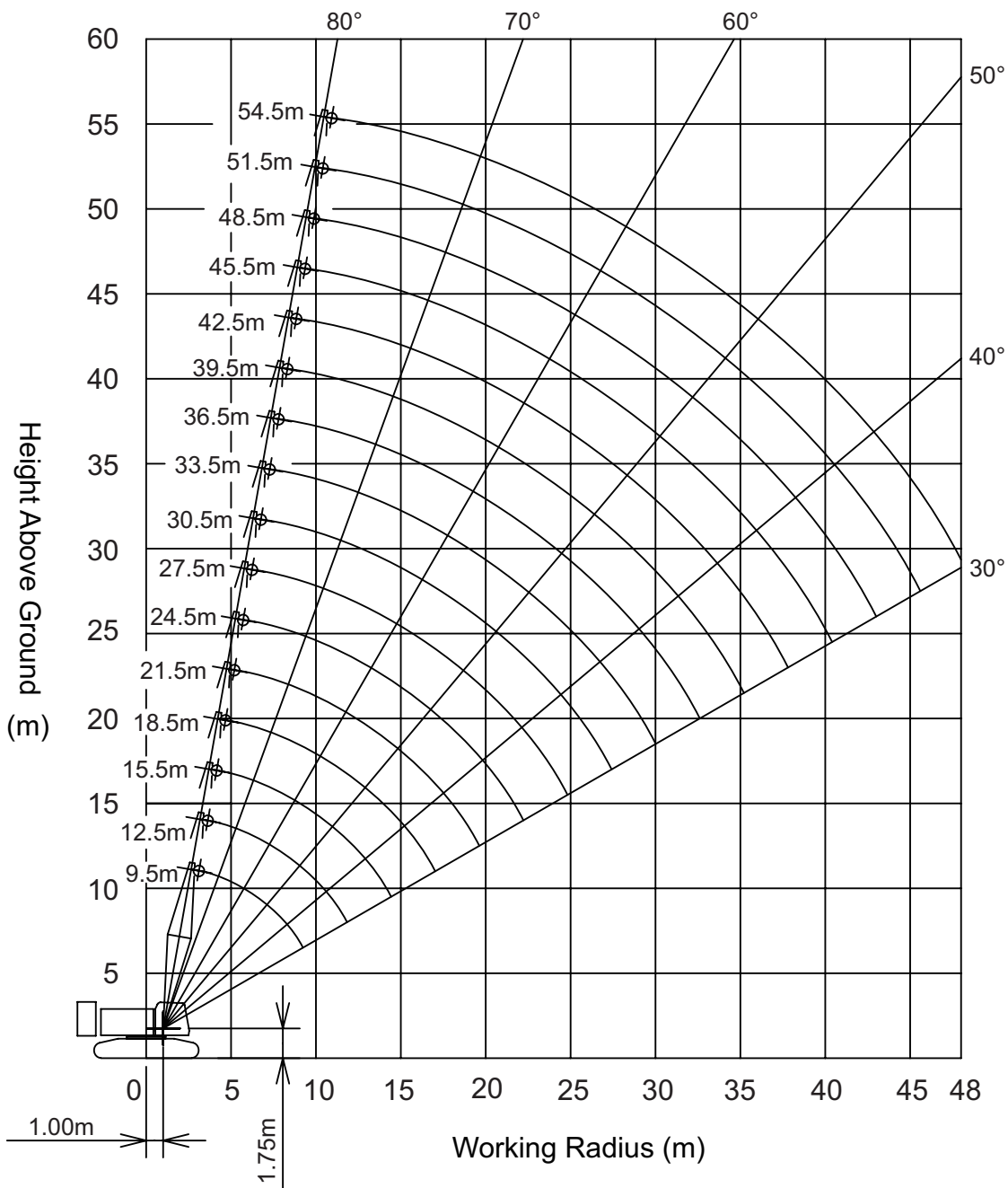
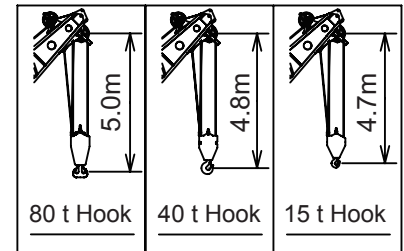
## Pendant Rope

Symbols	Length (m)	Rope Diameter (mm)	Imprint
3	3	30	□ • △ • 30 • 3 • C
3.22	3.22	30	□ • △ • 30 • 3.22 • C
6	6	30	□ • △ • 30 • 6 • C
9	9	30	□ • △ • 30 • 9 • C

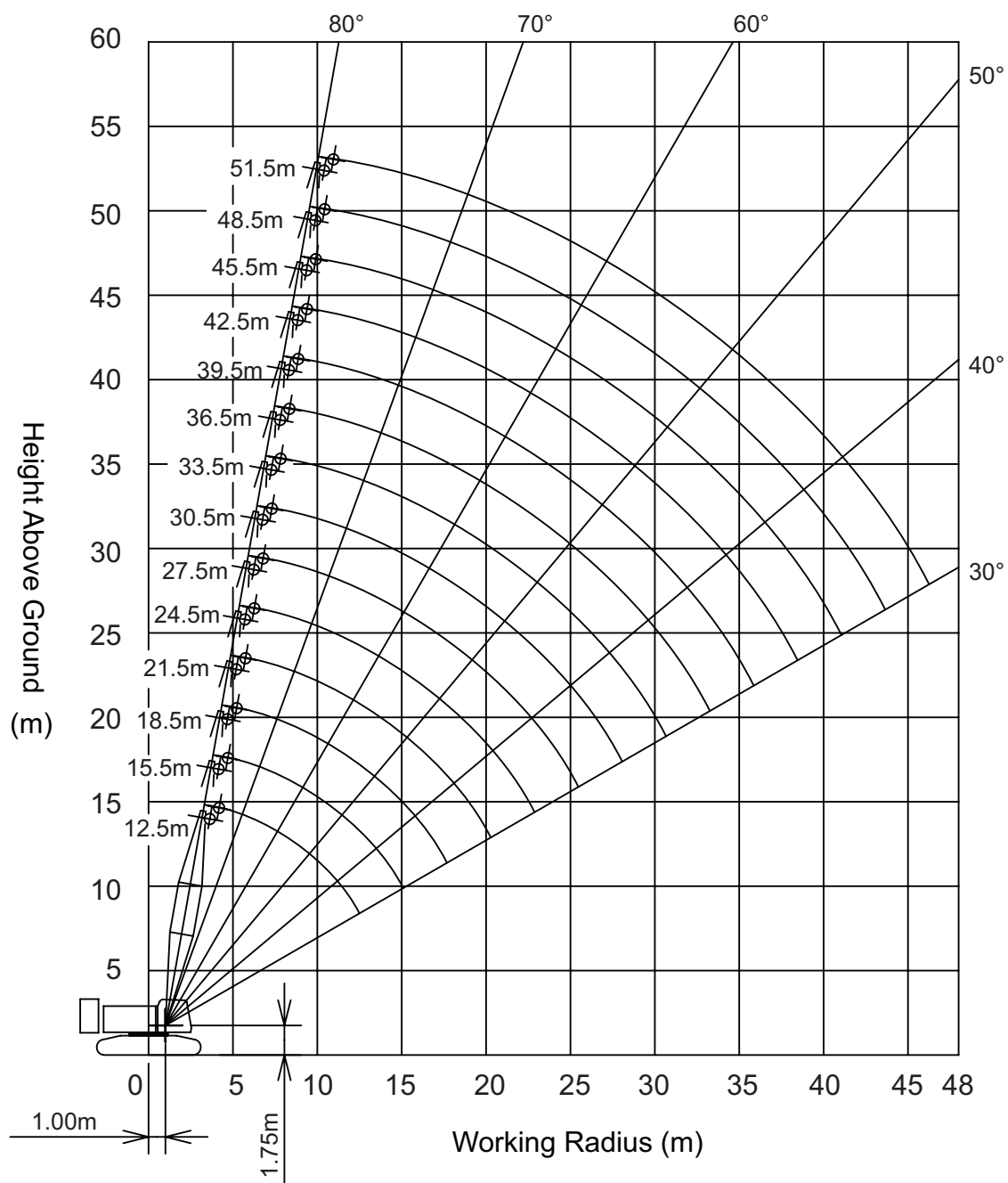
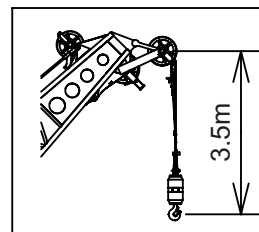


## Working Ranges

### ■ Main Boom



## ■ Aux. Sheave





## Gross Rated Load Table

## Main Boom



Working Radius (m)	Boom Length (m)									Working Radius (m)
	9.5	12.5	15.5	18.5	21.5	24.5	27.5	30.5	33.5	
3.2	80.00	3.8m x								3.2
3.5	80.00	76.75t	4.3m x							3.5
4	73.25	73.10	68.10t	4.9m x						4
4.5	65.50	65.35	65.20	60.00t	5.4m x					4.5
5	59.20	59.05	58.90	58.85	52.75t					5
5.5	52.50	53.85	53.70	52.75	51.55		6.5m x			5.5
6	46.15	48.55	48.35	47.40	46.35	45.55	40.75t	7.1m x	7.6m x	6
7	36.45	39.60	39.65	39.40	38.60	37.90	37.30	36.25t	32.75t	7
8	29.15	32.65	32.55	32.55	32.50	32.45	31.90	31.45	30.80	8
9	23.10	27.65	27.55	27.55	27.45	27.45	27.40	27.35	26.85	9
10	9.4m x	23.60	23.85	23.80	23.75	23.70	23.65	23.60	23.50	10
12	20.85t	16.55	18.70	18.65	18.55	18.50	18.45	18.35	18.30	12
14			14.80	15.20	15.10	15.05	15.00	14.90	14.85	14
16			14.6m x	12.80	12.70	12.60	12.55	12.45	12.40	16
18			13.45t	17.2m x	10.85	10.80	10.75	10.65	10.55	18
20				11.20t	19.8m x	9.40	9.30	9.20	9.15	20
22					9.40t	8.30	8.20	8.10	8.00	22
24						22.4m x	7.30	7.20	7.10	24
26						8.05t	25.0m x	6.40	6.30	26
28							6.90t	27.6m x	5.65	28
30								5.85t	5.10	30
32									30.2m x	32
34									5.05t	34

Working Radius (m)	Boom Length (m)							Working Radius (m)
	36.5	39.5	42.5	45.5	48.5	51.5	54.5	
7	8.2m x	8.7m x						7
8	29.75t	27.20t	9.3m x	9.8m x				8
9	26.65	26.10	25.20t	23.20t	10.3m x	10.9m x	11.5m x	9
10	23.45	23.05	23.05	22.65	21.40t	19.65t	14.00t	10
12	18.25	18.15	18.10	18.05	17.80	17.45	14.00	12
14	14.80	14.70	14.65	14.55	14.45	14.35	14.00	14
16	12.35	12.20	12.20	12.10	11.95	11.90	11.90	16
18	10.50	10.40	10.35	10.25	10.15	10.05	10.00	18
20	9.05	8.95	8.90	8.80	8.70	8.55	8.55	20
22	7.95	7.80	7.75	7.65	7.50	7.40	7.35	22
24	7.00	6.85	6.80	6.70	6.55	6.45	6.40	24
26	6.20	6.05	6.00	5.90	5.75	5.65	5.60	26
28	5.55	5.40	5.35	5.25	5.10	4.95	4.90	28
30	5.00	4.85	4.75	4.65	4.50	4.40	4.35	30
32	4.50	4.35	4.30	4.15	4.00	3.90	3.85	32
34	32.8m x	3.90	3.85	3.75	3.60	3.45	3.40	34
36	4.30t	35.4m x	3.45	3.35	3.20	3.10	3.00	36
38		3.65t	3.15	3.00	2.85	2.75	2.70	38
40				2.70	2.55	2.45	2.40	40
42				40.6m x	2.30	2.20	2.10	42
44				2.65t	43.2m x	1.95	1.85	44
46					2.15t	45.8m x	1.65	46
48						1.75t	1.45	48
50							48.3m x	50
							1.40t	

- Capacities are the maximum allowable and based on machine standing level on firm supporting surface under ideal job conditions.
- Capacities are in metric tones, and are not more than 78% of minimum tipping loads except the figures surrounded by bold lines which are based on other factor of machine structural strength limitation; the design codes/standards applied to the capacities are from "Construction Codes for Mobile Crane" and "Ordinance on Safety of Crane and Similar Equipment" issued by Ministry of Health, Labour and Welfare, Japan.
- Capacities are based on freely suspended loads and make no allowance for such factors as the effect of wind, sudden stop of loads, supporting surface conditions and operating speed. Operator must reduce load ratings to take such conditions into account.
- Deduction from rated capacities must be made for weight of hook block, hook ball, sling, spreader bar or any suspended gear.
- 27.9ton counter weight is required for all capacities on this chart.
- Figures described as OOm x OOt in the tables indicate "working radius" m x "rated load" ton.
- Correlation between the number of reeved lines, maximum rated loads, hook mass are shown in the table below.

Hook Capacity	Hook Mass(ton)	Maximum Rated Load (ton)									
		11falls	10falls	9falls	8falls	7falls	6falls	5falls	4falls	3falls	2falls
80t	0.80	80	70	63	56	49	42	35	28	21	14
40t	0.41	-	-	-	-	-	40	35	28	21	14
15t	0.32	-	-	-	-	-	-	-	-	15	14

## ■ Aux. Sheave



Working Radius (m)	Boom Length (m)									Working Radius (m)
	12.5	15.5	18.5	21.5	24.5	27.5	30.5	33.5	36.5	
4.6	7.00	5.1m x								4.6
5	7.00	7.00t	5.7m x							5
5.5	7.00	7.00	7.00t	6.2m x	6.8m x					5.5
6	7.00	7.00	7.00	7.00t	7.00t	7.3m x	7.9m x			6
7	7.00	7.00	7.00	7.00	7.00	7.00t	7.00t	8.4m x		7
8	7.00	7.00	7.00	7.00	7.00	7.00	7.00	7.00t		8
9	7.00	7.00	7.00	7.00	7.00	7.00	7.00	7.00	7.00	9
10	7.00	7.00	7.00	7.00	7.00	7.00	7.00	7.00	7.00	10
12	7.00	7.00	7.00	7.00	7.00	7.00	7.00	7.00	7.00	12
14	13.1m x	7.00	7.00	7.00	7.00	7.00	7.00	7.00	7.00	14
16	7.00t	15.7m x	7.00	7.00	7.00	7.00	7.00	7.00	7.00	16
18		7.00t	7.00	7.00	7.00	7.00	7.00	7.00	7.00	18
20			18.3m x	7.00	7.00	7.00	7.00	7.00	7.00	20
22			7.00t	20.9m x	7.00	7.00	7.00	7.00	7.00	22
24				7.00t	23.5m x	7.00	7.00	6.90	6.80	24
26					7.00t	6.35	6.25	6.10	6.05	26
28						26.1m x	5.55	5.45	5.35	28
30						6.35t	28.7m x	4.90	4.80	30
32							5.35t	31.3m x	4.30	32
34								4.55t	33.9m x	34
36									3.90t	36

Working Radius (m)	Boom Length (m)					Working Radius (m)
	39.5	42.5	45.5	48.5	51.5	
8	9.5m x					8
9	7.00t	10.1m x	10.6m x	11.1m x	11.7m x	9
10	7.00	7.00t	7.00t	7.00t	7.00t	10
12	7.00	7.00	7.00	7.00	7.00	12
14	7.00	7.00	7.00	7.00	7.00	14
16	7.00	7.00	7.00	7.00	7.00	16
18	7.00	7.00	7.00	7.00	7.00	18
20	7.00	7.00	7.00	7.00	7.00	20
22	7.00	7.00	7.00	7.00	7.00	22
24	6.70	6.60	6.50	6.35	6.25	24
26	5.90	5.80	5.70	5.55	5.45	26
28	5.20	5.15	5.00	4.85	4.75	28
30	4.65	4.55	4.45	4.30	4.20	30
32	4.15	4.05	3.95	3.80	3.70	32
34	3.70	3.65	3.50	3.35	3.25	34
36	3.35	3.25	3.15	3.00	2.85	36
38	36.5m x	2.90	2.80	2.65	2.50	38
40	3.25t	39.1m x	2.50	2.35	2.20	40
42		2.75t	41.7m x	2.05	1.95	42
44			2.25t	1.85	1.70	44
46				44.3m x	1.50	46
48				1.80t	46.9m x	48
					1.40t	

- Capacities are the maximum allowable and based on machine standing level on firm supporting surface under ideal job conditions.
- Capacities are in metric tones, and are not more than 78% of minimum tipping loads except the figures surrounded by bold lines which are based on other factor of machine structural strength limitation; the design codes/standards applied to the capacities are from "Construction Codes for Mobile Crane" and "Ordinance on Safety of Crane and Similar Equipment" issued by Ministry of Health, Labour and Welfare, Japan.
- Capacities are based on freely suspended loads and make no allowance for such factors as the effect of wind, sudden stop of loads, supporting surface conditions and operating speed. Operator must reduce load ratings to take such conditions into account.
- Deduction from rated capacities must be made for weight of hook block, hook ball, sling, spreader bar or any suspended gear.
- 27.9ton counter weight is required for all capacities on this chart.
- Figures described as OOm x OOt in the tables indicate "working radius" m x "rated load" ton.
- Hook mass are shown in the table below.

Hook Capacity	Hook Mass(ton)
80t	0.80
40t	0.41
15t	0.32
7t	0.18

## Main Boom with Aux. Sheave



Unit : ton

Working Radius (m)	Boom Length (m)									Working Radius (m)
	12.5	15.5	18.5	21.5	24.5	27.5	30.5	33.5	36.5	
3.8	76.30	4.3m x								3.8
4	72.70	67.70t	4.9m x							4
4.5	64.95	64.80	59.55t	5.4m x						4.5
5	58.65	58.50	58.40	52.30t						5
5.5	53.45	53.30	52.30	51.15		6.5m x				5.5
6	48.15	47.90	47.00	45.95	45.10	40.30t	7.1m x	7.6m x		6
7	39.15	39.40	38.95	38.15	37.45	36.85	35.75t	32.25t	8.2m x	7
8	32.40	32.35	32.30	32.25	31.95	31.40	30.95	30.30	29.25t	8
9	27.35	27.35	27.30	27.20	27.20	27.15	26.95	26.35	26.15	9
10	23.10	23.65	23.60	23.50	23.45	23.40	23.35	23.25	23.05	10
12	16.10	18.45	18.40	18.30	18.25	18.20	18.10	18.05	18.00	12
14		14.30	15.00	14.90	14.85	14.75	14.65	14.60	14.55	14
16		14.6m x	12.60	12.45	12.40	12.30	12.20	12.15	12.05	16
18		13.00t	17.2m x	10.65	10.60	10.50	10.40	10.30	10.25	18
20			10.75t	19.8m x	9.20	9.10	9.00	8.90	8.80	20
22				8.95t	7.90	7.95	7.85	7.75	7.65	22
24					22.4m x	7.05	6.90	6.80	6.70	24
26					7.55t	25.0m x	6.15	6.00	5.95	26
28						6.45t	27.6m x	5.35	5.25	28
30							5.45t	4.70	4.70	30
32								30.2m x	4.20	32
34								4.60t	32.8m x	34
36									3.90t	36

Unit : ton

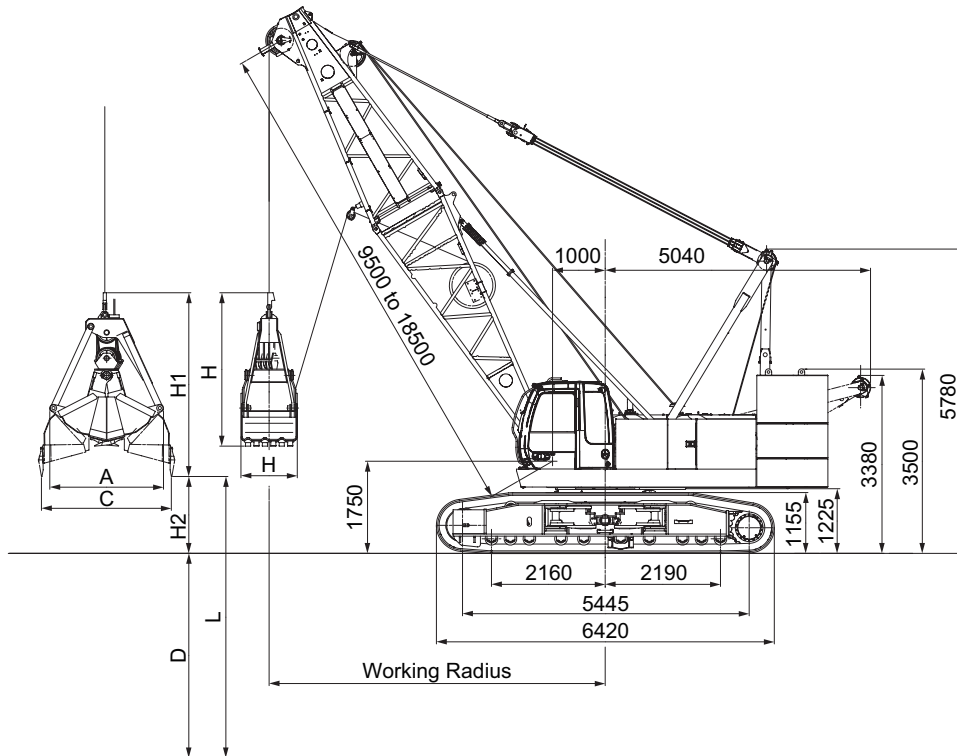
Working Radius (m)	Boom Length (m)					Working Radius (m)
	39.5	42.5	45.5	48.5	51.5	
7	8.7m x					7
8	29.65t	9.3m x	9.8m x			8
9	25.60	24.65t	22.65t	10.3m x	10.9m x	9
10	22.50	22.55	22.10	20.85t	15.00t	10
12	17.85	17.85	17.60	17.20	15.00	12
14	14.40	14.35	14.25	14.15	13.85	14
16	11.95	11.90	11.80	11.70	11.60	16
18	10.10	10.05	9.95	9.85	9.70	18
20	8.70	8.60	8.50	8.35	8.25	20
22	7.50	7.45	7.35	7.20	7.05	22
24	6.55	6.50	6.40	6.25	6.10	24
26	5.80	5.70	5.60	5.45	5.30	26
28	5.10	5.05	4.90	4.75	4.65	28
30	4.55	4.50	4.35	4.20	4.10	30
32	4.05	4.00	3.85	3.70	3.60	32
34	3.65	3.55	3.45	3.30	3.15	34
36	35.4m x	3.20	3.05	2.90	2.80	36
38	3.20t	2.70	2.75	2.55	2.45	38
40			2.30	2.30	2.15	40
42			40.6m x	1.90	1.85	42
44			2.15t	43.2m x	1.50	44
46				1.65t	45.8m x	46
					1.20t	

- Capacities are the maximum allowable and based on machine standing level on firm supporting surface under ideal job conditions.
- Capacities are in metric tones, and are not more than 78% of minimum tipping loads except the figures surrounded by bold lines which are based on other factor of machine structural strength limitation; the design codes/standards applied to the capacities are from "Construction Codes for Mobile Crane" and "Ordinance on Safety of Crane and Similar Equipment" issued by Ministry of Health, Labour and Welfare, Japan.
- Capacities are based on freely suspended loads and make no allowance for such factors as the effect of wind, sudden stop of loads, supporting surface conditions and operating speed. Operator must reduce load ratings to take such conditions into account.
- Deduction from rated capacities must be made for weight of hook block, hook ball, sling, spreader bar or any suspended gear.
- 27.9ton counter weight is required for all capacities on this chart.
- Figures described as OOm x OOt in the tables indicate "working radius" m x "rated load" ton.
- Correlation between the number of reeved lines, maximum rated loads, hook mass are shown in the table below.

Hook Capacity	Hook Mass(ton)	Maximum Rated Load (ton)									
		11falls	10falls	9falls	8falls	7falls	6falls	5falls	4falls	3falls	2falls
80t	0.80	80	70	63	56	49	42	35	28	21	14
40t	0.41	-	-	-	-	-	40	35	28	21	14
15t	0.32	-	-	-	-	-	-	-	-	15	14

# Clamshell Specifications

## Dimensions and Specifications



### Working Ranges

Boom Length	m	9.5				12.5				15.5				18.5			
Boom Angle	°	35	45	55	65	35	45	55	65	35	45	55	65	35	45	55	65
Working Radius	m	9.2	8.2	7.0	5.7	11.7	10.4	8.7	7.0	14.2	12.5	10.5	8.3	16.6	14.6	12.2	9.5
Allowable Gross Weight	t	6.0	6.0	6.0	6.0	6.0	6.0	6.0	6.0	6.0	6.0	6.0	6.0	6.0	6.0	6.0	6.0
Lifting Height L (D + H <sub>2</sub> )	m	37.4	38.7	39.8	40.7	39.1	40.9	42.3	43.4	40.8	43.0	44.7	46.1	42.5	45.1	47.2	48.9
Max. Excavation Depth D	m	36															
Dumping Height H <sub>2</sub>	m	1.4	2.7	3.8	4.7	3.1	4.9	6.3	7.4	4.8	7.0	8.7	10.1	6.5	9.1	11.2	12.9

### Specifications

Clamshell Specifications			
Bucket Capacity	m³	0.8/1.0/1.2	
Allowable Gross Weight	t	6.0	
Boom Length	m	9.5 to 18.5	
Max. Excavation Depth	m	36	
Suspend Line Speed	m/min	*75	Wire Rope Diameter 22 mm
Open/Close Line Speed	m/min	*75	
Boom Hoist Line Speed	m/min	*62	Wire Rope Diameter 16 mm
Boom Lower Line Speed	m/min	*62	
Ground Contact Pressure	kPa (kgf/cm²)	83.0 (0.85) (w/ 9.5m Boom + 1.2 m³ Bucket)	
Operating Weight	t	74.6 (w/ 9.5m Boom + 1.2 m³ Bucket)	

NOTE :

- 1.\*Line speeds will vary with the load.
- 2.Data is expressed in SI units, followed by conventional units in ( ).
- 3.Other specifications, not shown are similar to those for the cranes.

### Clamshell Bucket

Capacity ( m <sup>3</sup> )	Weight ( t )	A (mm)	B (mm)	C (mm)	H (mm)	H1 (mm)	Use
0.8	2.00	1880	970	2230	2270	2980	Excavation
1.0	2.45	2020	1070	2430	2430	3150	Excavation
1.2	3.10	2020	1070	2430	2430	3150	Excavation
1.2	2.40	2000	1160	2650	2600	3240	Light Service

### Gross Rated Load Table

Working Radius (m)	Unit ; ton			
	9.5	12.5	15.5	18.5
5.7	6.00			
6	6.00			
7	6.00	6.00	8.3m x	
8	6.00	6.00	6.00t	9.5m x
9	6.00	6.00	6.00	6.00t
10	9.2m x	11.7m x	6.00	6.00
12	6.00t	6.00t	6.00	6.00
14			6.00	6.00
16			14.2m x	6.00
16			6.00t	6.00

1. Working radius is the horizontal distance from the swing center to the gravity of lifted load.
2. The rated loads for clamshell do not exceed 70% of tipping load.
3. The rated loads shown are upper limits determined by the following equation. Please select a bucket in such a manner that its rated load does not exceed the rated load shown below, according to kinds of the loads handled.  
Rated load = Bucket capacity (m<sup>3</sup>) x Specific gravity of load (t/m<sup>3</sup>) + Bucket weight (t)
4. Even if using different capacity of the bucket according to kinds of load, don't exceed the rated load.
5. The counter weight is 27.9 t.

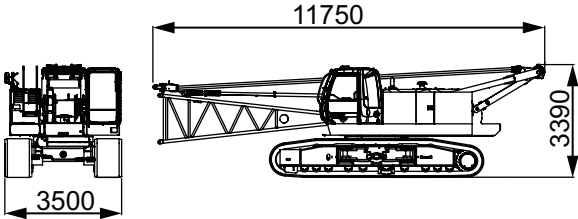
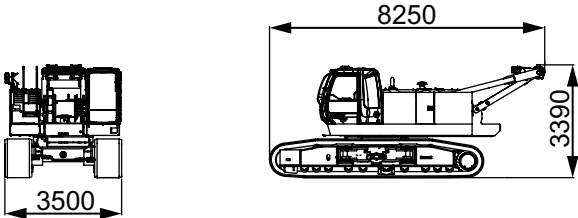
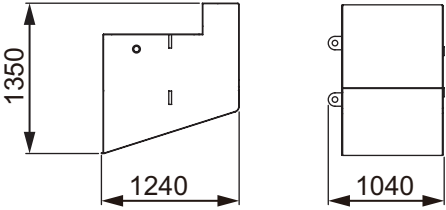
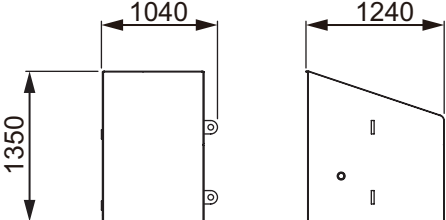
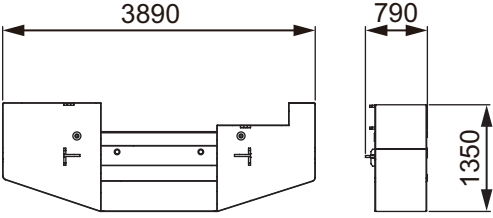
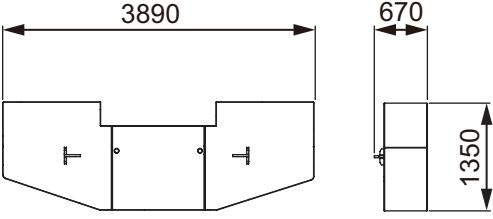
# Weights and Dimensions of Disassembled Units

## Weights and Dimensions List

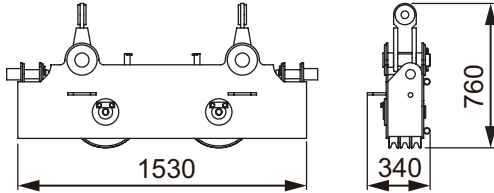
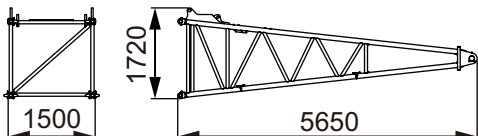
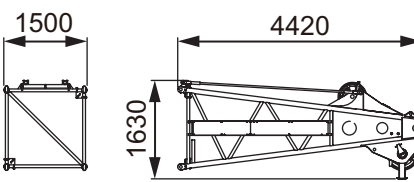
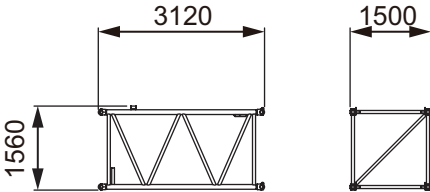
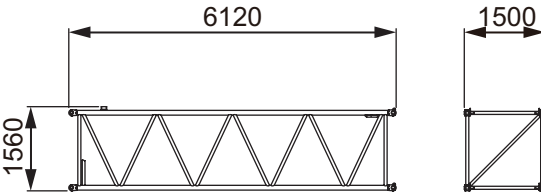
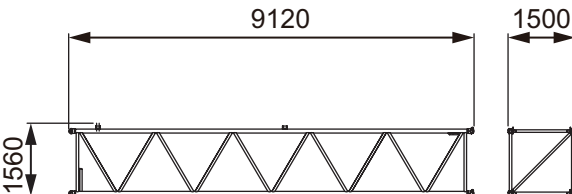
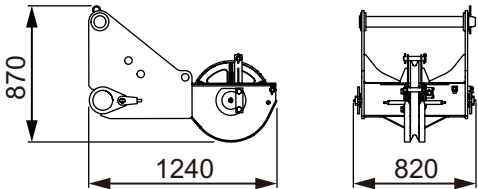
Comply with the regulations when transporting.

"Weight" refers to the mass of each single unit.

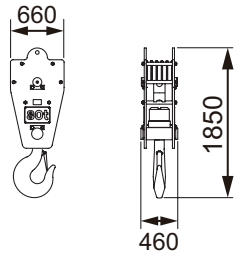
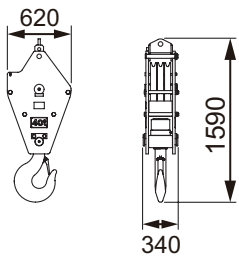
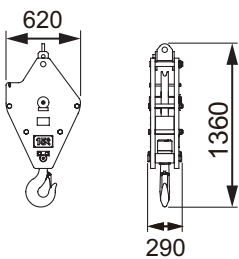
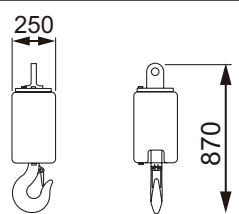
Weights and Dimensions of Disassembled Units

Description	Qty	Dimensions (mm)	Weight (kg)
Base Crane with : Boom Base Front Winch Wire Rope Boom Hoist Wire Rope	1		42600
Base Crane with : Front Winch Wire Rope Boom Hoist Wire Rope	1		41100
Counter Weight Top (Right Side)	1		6000
Counter Weight Top (Left Side)	1		4900
Counter Weight (Middle)	1		8500
Counter Weight (Base)	1		8500

## Weights and Dimensions of Disassembled Units

Description	Qty	Dimensions (mm)	Weight (kg)
Upper Spreader	1		265
Boom Base with Connect Pins with Boom Back Stops	1		1200
Boom Top with Pendant Ropes	1		1060
3 m Boom Insert with Connect Pins without Pendant Ropes	1		310
6 m Boom Insert with Connect Pins without Pendant Ropes	1		520
9 m Boom Insert with Connect Pins without Pendant Ropes	1		710
Aux. Sheave with Connect Pins	1		220

Weights and Dimensions of Disassembled Units

Description	Qty	Dimensions (mm)	Weight (kg)
80 t Hook	1		800
40 t Hook	1		410
15 t Hook	1		320
7 t Hook	1		180

# Equipment List

## Standard and Optional Equipment

○ : Standard ● : Optional

Item		Lift Crane	Notes
Basic Items	Winch with Free Mechanism	○	Front and Rear Winch
	Brake Pedals for Front and Rear Winch	○	
	Crawler Extend / Retract Device	○	
	Working Light (× 2)	○	
	Back Mirror (Left and right)	○	
	Wiper with Washer (Front window)	○	
	Room Lamp	○	
	Cigar Lighter Socket (24 V)	○	
	Ashtray	○	
	Cup Holder	○	
	AM / FM Radio	○	
	Air Conditioner	○	Full Automatic
	Cross Operation Lever	○	
	Accelerator Pedal (Right side)	○	
	Hydraulic Pump Flow Rate Select Switch	○	Max. or Min. Rate
	Electric Fuel Pump	○	
	Travel Operation Pedal	○	
	Under Cover (Right side)	○	Engine Side
	Under Cover (Left side)	●	Cab Side
	Left Side House Cover	●	
	Clear Roof Cover	●	Smoke Tinted
	Counter Weight Lifting Wire Rope	○	
	3 m Boom Insert	●	
	6 m Boom Insert	●	
	9 m Boom Insert	●	
	Parts Set for Auxiliary Sheave (Auxiliary sheave, Anti-two block)	○	
	80 t Hook (5 sheaves)	●	
	40 t Hook (3 sheaves)	●	
	15 t Hook (1 sheave)	●	
	7 t Hook	●	
	Rear Winch Wire Rope	○	
	Spring Type Tagline	●	
Meters & Lamps	Coolant Temp. Gauge	○	
	Fuel Gauge	○	
	Hourmeter	○	
	Swing Brake Indicator	○	
	Alternator Indicator	○	
	Engine Oil Pressure Indicator	○	
	Air Filter Restriction Indicator	○	
	Overheat Indicator	○	
Safety	Preheat Indicator	○	
	Moment Limiter	○	
	Anti-Two Block	○	
	Boom Hoist Limiting Device	○	
	Secondary Boom Over Hoist Prevent Device	○	
	Swing & Travel Alarm	○	
	3 Color Percentage Indicator	○	
	Drum Lock	Front Winch	○
		Rear Winch	○
		Boom Hoist Winch	○
	Swing Lock	○	Automatic Lock Pin for Transport
	Gate Lock Lever	○	
	Auto Stop Override Select Key Switch	○	
	Auto Stop Override Switch	○	



Handwriting practice area with horizontal dashed lines.





- We are constantly improving our products and therefore reserve the right to change designs and specifications without notice.
- Units in this specification are shown under International System of Units; the figures in parenthesis are under Gravitational System of Units as old one.

---

## Sumitomo Heavy Industries Construction Cranes Co., Ltd.

9-3, Higashi-Ueno 6-chome, Taito-ku, Tokyo 110-0015, Japan  
Phone: 81-3-3845-1387 Facsimile: 81-3-3845-1394

<http://www.hsc-cranes.com>