

The background of the image is a close-up, high-contrast photograph of a car's body panel, likely a door or fender, in a vibrant yellow-gold color. The surface is highly reflective, showing bright highlights and deep shadows that emphasize its curved shape. Overlaid on this background is a horizontal black bar. On the left side of this bar is the 'Dieci' logo in a bold, italicized, yellow font. To the right of the logo, the word 'PEGASUS' is written in a white, sans-serif font. Below 'PEGASUS', a series of numbers are listed, separated by vertical bars. The entire composition is framed by several thin, parallel diagonal lines in a light yellow-gold color, which run from the top right towards the bottom left, adding a sense of motion and design to the layout.

DIECI

PEGASUS

40.16 | 40.18 | 50.25 | 60.16 | 60.21 | 45.30 | 50.26



NEW CONSTRUCTION *THE CONSTRUCTION SITE IN YOUR HANDS*

The needs on construction sites are changing: management costs must be reduced, vehicle productivity must be continuously improved. And Dieci meets the new customer requirements, evolving its Product Offering with new models to complete the Construction range.

More versatile vehicles - to perform a wider range of tasks - more **powerful**, more **reliable**, **easy** and intuitive to drive, while guaranteeing maximum safety at all times. Easier also to maintain, thanks to the use of **durable** components and cutting-edge materials.

The **Pegasus** family outperforms all telehandlers in terms of maximum load capacity and reach and thanks to the continuous turret rotation*, they can cover an operating area of up to 2122 square metres. The wide range of available equipment allows you to perform the functions of a telehandler, a crane and an aerial platform with just a single vehicle: **the whole construction site in your hands.**

* Not available on the 40.16 and 40.18

VERSATILE AND SAFE

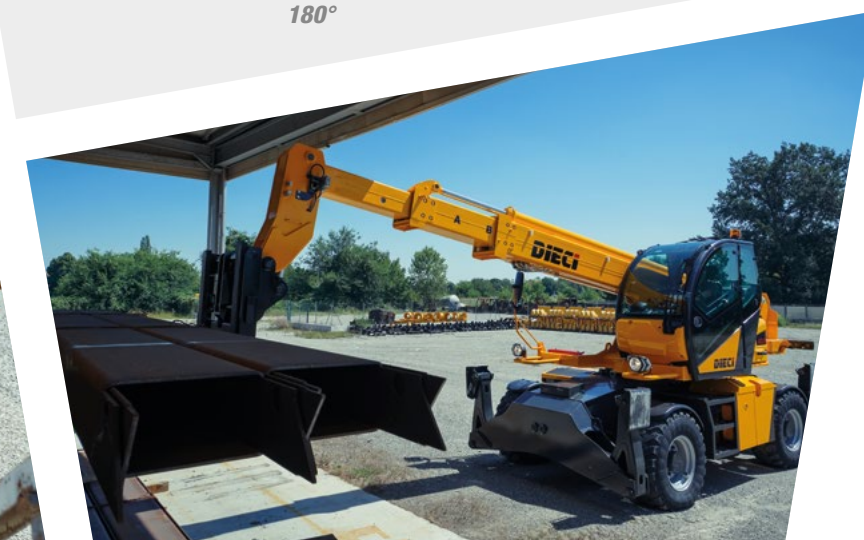
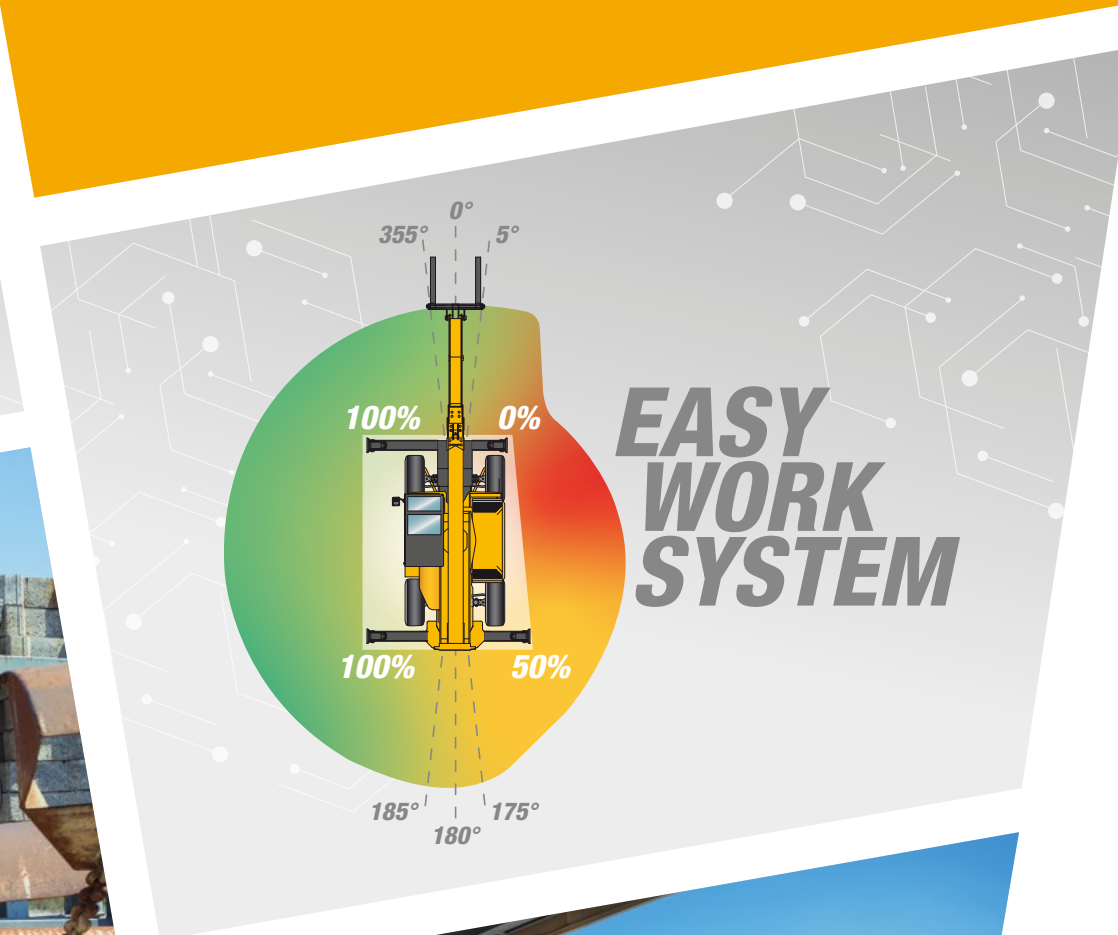
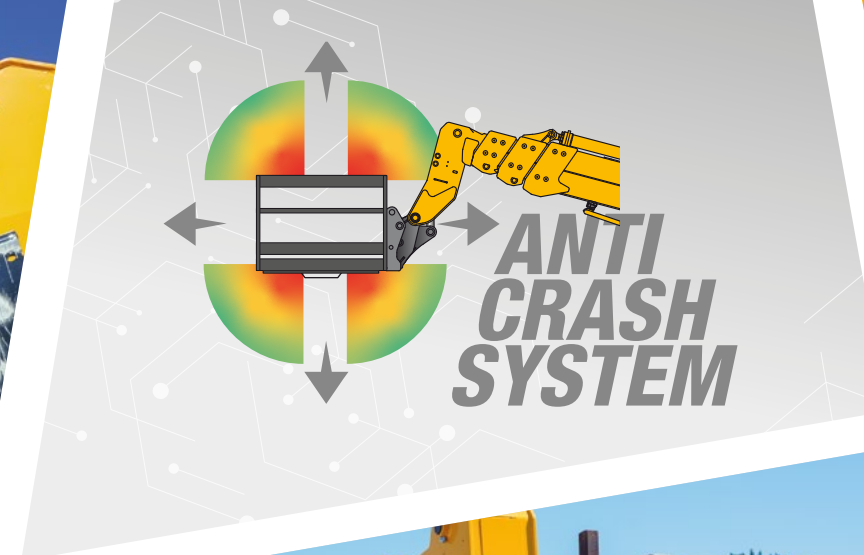
ALL IN ONE VEHICLE

- Better than a conventional telehandler: **continuous turret rotation*** allows you to cover an operating area of up to 2122.00 m²
- Better than a boom lift: great **stability and precision**, even at extreme heights
- Better than a crane: traveling and lifting in **total safety**, both on wheels and on outriggers, on level ground and off-road

AUTOMATION SAFETY

- **Self-levelling:** the machine levels itself automatically at the press of a button, on any terrain
- **Easy Work system:** the load capacity adjusts automatically according to the position of the outriggers*
- **Anti Crash system:** zero collisions, absolute precision and maximum safety for operators in the basket, thanks to the setting of operating limits in all directions
- **Arm too high** function: travel speed limited automatically when the boom is raised
- **Axle locking:** oscillation of the rear axle is automatically locked when the boom is raised and the turret is rotated more than 5°

* Not available on the 40.16 and 40.18



PEGASUS 40.16

- ↑ Height 15.7 m
- 📦 Capacity 4000 kg
- ⚡ Power 85.9 kW@2200 rpm
- 🚚 Unladen weight 13660 kg
- 🔄 400° rotation



PEGASUS 40.18

- ↑ Height 18.0 m
- 📦 Capacity 4000 kg
- ⚡ Power 85.9 kW@2200 rpm
- 🚚 Unladen weight 14700 kg
- 🔄 400° rotation



PEGASUS 50.25

- ↑ Height 24.1 m
- 📦 Capacity 5000 kg
- ⚡ Power 100 kW@2200 rpm
- 🚚 Unladen weight 18000 kg
- 🔄 Continuous rotation



PEGASUS 60.16

- ↑ Height 16.2 m
- 📦 Capacity 6000 kg
- ⚡ Power 100 kW@2200 rpm
- 🚚 Unladen weight 17300 kg
- 🔄 Continuous rotation



PEGASUS 60.21

- ↑ Height 20.5 m
- 📦 Capacity 6000 kg
- ⚡ Power 100 kW@2200 rpm
- 🚚 Unladen weight 17800 kg
- 🔄 Continuous rotation



PEGASUS 50.26

- ↑ Height 25.7 m
- 📦 Capacity 5000 kg
- ⚡ Power 127 kW@1900 rpm
- 🚚 Unladen weight 21000 kg
- 🔄 Continuous rotation



PEGASUS 45.30

- ↑ Height 29.6 m
- 📦 Capacity 4500 kg
- ⚡ Power 127 kW@1900 rpm
- 🚚 Unladen weight 22150 kg
- 🔄 Continuous rotation



HANDLING AND CONTROL

ADVANCED TECHNOLOGY, EASY MANOEUVRING

- The superior technology of the Pegasus dramatically increases the capacity for vehicle control with a fully-integrated advanced **electronic management system**. Rpm, travel speed and diagnostic data are fed to a **single control unit** that measures and displays the operating parameters in real time.
- The enhanced **Soft Motion** system makes all boom movements easy to control, reducing speed on approaching the physical limits or in pre-alarm conditions.
- The **reverse drive*** function automatically adapts the steering controls and axle tilt lock when the turret is rotated through 180°, while the **automatic wheel alignment** function (optional) facilitates steering mode selection.

* Optional, not available on the 40.16 and 40.18



ADVANCED CONTROL

- VDC for the control mode with 7" display, interactive and full navigable*
- 3 selectable driving modes: eco, normal and creeper**
- 3 selectable steering modes: front-wheel, four-wheel and crab
- Ecowork function: joystick with integrated automatic throttle **
- Travel speed limiter with dynamic increase/decrease**

* Not available on the 40.16 and 40.18

** Available on the 50.26 and 45.30

MAXIMUM BOOM PRODUCTIVITY

- Reinforced boom in **High Strength Steel**, responsive and ready at all times
- Extension cylinder movement damped on retraction and improved comfort with **Soft Motion**
- **Electronic suspension control** based on speed and height
- **Load Sensing - Flow Sharing** control valves 5 simultaneous movements with independently settable maximum speeds



POWERFUL, FAST AND ECOLOGICAL

HYDROSTATIC TRANSMISSION

- Inching pedal: **maximum manoeuvring precision** even at full engine power
- Maximum speed **40 km/h***

* 30 km/h for 40.16 and 40.18 models

ELECTRONIC EVOLUTION

- **Choice of three engine sizes:** optimized output and efficiency
- **High torque** to ensure **maximum performance**
- Full electronic engine control: **limited fuel consumption** and **reduced emissions**

CLEAN POWER

- Stage V/Tier 4f*
- DOC+SCR catalysts
- DPF filter**
- AdBlue tank

* Stage IV/Tier 4f for 50.26 and 45.30

** Where required by specific anti-pollution regulations, not available on the 50.26 and 45.30 models



TECHNOLOGY AND COMFORT

TOTAL VISIBILITY

- Optimal visibility in all directions, thanks to the **extensive glass area** and the **panoramic cab roof with wiper**
- **Integrated LED work lights:** better visibility, lower power consumption, longer lifespan*
- Lights everywhere: perimeter, on the boom and on the boom head*
- **3 wireless cameras:** rear, right side and boom head **with dedicated 7" display***
- Alternatively, a **rear-view camera***, with the image shown on the vehicle's integrated display

FULL COMFORT

- Cab with the **widest access door on the market**
- Meticulously designed control layout
- Adjustable steering column and armrest
- Driver's seat with a choice of **mechanical or pneumatic suspension**
- **Optimized air flows:** numerous outlet vents, rear window and roof window can be opened
- Heated rear window*
- **Double air filter:** operator protected against dust and odours*

* Optional



UNRIVALLED TECHNOLOGY

- Driver's seat with **Capacitive 5 in 1 joystick** as standard*
- Interactive joystick with integral specific LED for each function
- **3.5" TFT Display** for diagnostics, transmission and steering management
- **7" TFT Display** implement control, servicing information, the load limiter and the rear-view camera**

* Dual joystick on the 50.26 and 45.30

** Not available on the 40.16 and 40.18

CONTROL AND SAFETY

- **Load indicator on the display:** gives the operator clearly visible indications of the machine configuration, the position of the outriggers, the boom angle and extension, the working height, the attachments fitted, the current load and the load limit
- **Automatic outrigger stowage** at the press of a button in the cab*
- **Radio control**(optional) with display allows remote control of all vehicle functions**

* Available on models 60.16, 60.21 and 50.25

** Standard equipment on models 50.26 and 45.30



DTS

- The innovative **Dieci Telematic System** enables the Dieci support team to interact remotely with the vehicle to allow geolocation, and the monitoring of performance and other telemetric functions
- By installing a high-tech control unit, the customer and the manufacturer can **connect to the machine in real time** from a computer or any mobile device and, through the **GSM and GPS networks**, discover where, if and how the machine is working, and **detect any operating anomalies**
- The operating data, collected via cloud, enable full **monitoring and diagnostics**. The support team can analyze the parameters directly, identify shortfalls in performance, and improve functionality by updating software or identify any maintenance operations required, thereby **optimizing costs** and ensuring **the vehicle and fleet are maintained in peak efficiency**
- The machine and its operators benefit from **active protection against theft and accident**: a notification is sent immediately if the vehicle leaves the predefined area. By setting a safe operating track, the operator is immediately alerted to any risk of impact or anomaly

VERSATILE AND MULTIFUNCTIONAL

READY FOR EVERYTHING

- **Automatic equipment recognition:** no manual operations required, load diagram preselection, for easier operation and **maximum safety**
- **Hydraulic accessories lock:** double cylinder, double-acting, maximum stability
- **Buckets** for aggregates, **mixers** for concrete, floating **forks and fork carriers**, centering **handlers**

BETTER THAN A CRANE

- **Maximum stability** on any ground
- **High capacity winch**
- **Jib cranes with winch** for maximum distances

BETTER THAN A BOOM LIFT

- **Distances of up to 33.8 metres** with a single placement
- **Extensible baskets** up to 6 meters
- **Positive-negative boom**





TECHNICAL DATA

PERFORMANCE

Vehicle model	PEGASUS 40.16 - 400°	PEGASUS 40.18 - 400°	PEGASUS 45.30	PEGASUS 50.25	PEGASUS 50.26	PEGASUS 60.16	PEGASUS 60.21
Maximum capacity	4000 kg (8818 lb)	4000 kg (8818 lb)	4500 kg (9921 lb)	5000 kg (11023 lb)	5000 kg (11023 lb)	6000 kg (13228 lb)	6000 kg (13228 lb)
Maximum lifting height	15,70 m (51,5 ft)	18,00 m (59,1 ft)	29,6 m (97,1 ft)	24,10 m (79,1 ft)	25,7 m (84,3 ft)	16,20 m (53,1 ft)	20,50 m (67,3 ft)
Maximum horizontal extension	13,40 m (44 ft)	15,30 m (50,2 ft)	26,0 m (85,3 ft)	21,50 m (70,5 ft)	21,9 m (71,9 ft)	13,70 m (44,9 ft)	18,10 m (59,4 ft)
Fork swiveling angle	133°	133°	133°	133°	133°	133°	133°
Towing force	6500 daN (14613 lbf)	6500 daN (14613 lbf)	10000 daN (22481 lbf)	9400 daN (21132 lbf)	10000 daN (22481 lbf)	9400 daN (21132 lbf)	9400 daN (21132 lbf)
Maximum climb angle	37%	37%	40%	40%	40%	40%	40%
Unladen weight	13660 kg (30115 lg)	14700 kg (32408 lb)	22150 kg (48832 lb)	18000 kg (39683 lb)	21000 kg (46297 lb)	17300 kg (38140 lb)	17800 kg (39242 lb)
Max speed (referred to wheels with maximum permitted diameter)	30 km/h (18,6 mph)	30 km/h (18,6 mph)	40 km/h (24,9 mph)	40 km/h (24,9 mph)	40 km/h (24,9 mph)	40 km/h (24,9 mph)	40 km/h (24,9 mph)

ENGINE

Vehicle model	PEGASUS 40.16 - 400°	PEGASUS 40.18 - 400°	PEGASUS 45.30	PEGASUS 50.25	PEGASUS 50.26	PEGASUS 60.16	PEGASUS 60.21
Brand	Perkins	Perkins	FPT	Perkins	FPT	Perkins	Perkins
Nominal power	85,9 kW (115 HP)	85,9 kW (115 HP)	125 kW (168 HP)	100 kW (134 HP)	125 kW (168 HP)	100 kW (134 HP)	100 kW (134 HP)
@rpm	2200 rpm	2200 rpm	2200 rpm	2200 rpm	2200 rpm	2200 rpm	2200 rpm
Peak power	85,9 kW (115 HP)	85,9 kW (115 HP)	127 kW (170 HP)	100 kW (134 HP)	127 kW (170 HP)	100 kW (134 HP)	100 kW (134 HP)
@rpm	2200 rpm	2200 rpm	1900 rpm	2200 rpm	1900 rpm	2200 rpm	2200 rpm
Operation	4-stroke	4-stroke	4-stroke	4-stroke	4-stroke	4-stroke	4-stroke
Injection	Electronic, Common Rail	Electronic, Common Rail	Electronic, Common Rail	Electronic, Common Rail	Electronic, Common Rail	Electronic, Common Rail	Electronic, Common Rail
Number and arrangement of cylinders	4, Vertical in line	4, Vertical in line	4, Vertical in line	4, Vertical in line	4, Vertical in line	4, Vertical in line	4, Vertical in line
Displacement	3621 cm³ (221 in³)	3621 cm³ (221 in³)	4485 cm³ (274 in³)	3621 cm³ (221 in³)	4485 cm³ (274 in³)	3621 cm³ (221 in³)	3621 cm³ (221 in³)
Consumption	216 g/kWh (355,32 lb/ Hp h)	216 g/kWh (355,32 lb/ Hp h)	280 g/kWh (460,6 lb/ Hp h)	216 g/kWh (355,32 lb/ Hp h)	280 g/kWh (460,6 lb/ Hp h)	216 g/kWh (355,32 lb/ Hp h)	216 g/kWh (355,32 lb/ Hp h)
@rpm	1900 rpm	1900 rpm	1900 rpm	1900 rpm	1900 rpm	1900 rpm	1900 rpm
Emission standard	Stage V/Tier 4f	Stage V/Tier 4f	Stage IV/Tier 4f	Stage IV/Tier 4f	Stage IV/Tier 4f	Stage V/Tier 4f	Stage V/Tier 4f
Exhaust gas treatment	DOC+DPF+SCR (with AdBlue)	DOC+DPF+SCR (with AdBlue)	DOC+SCR (AdBlue)	DOC+DPF+SCR (with AdBlue)	DOC+SCR (AdBlue)	DOC+DPF+SCR (with AdBlue)	DOC+DPF+SCR (with AdBlue)
Cooling system	Liquid	Liquid	Liquid	Liquid	Liquid	Liquid	Liquid
Intake	16-valve turbocharger with aftercooler	16-valve turbocharger with aftercooler	16-valve turbo compressor, aftercooler	16-valve turbocharger with aftercooler	16-valve turbo compressor, aftercooler	16-valve turbocharger with aftercooler	16-valve turbocharger with aftercooler



HYDRAULIC SYSTEM

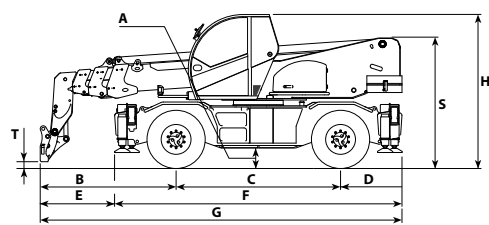
Vehicle model	PEGASUS 40.16 - 400°	PEGASUS 40.18 - 400°	PEGASUS 45.30	PEGASUS 50.25	PEGASUS 50.26	PEGASUS 60.16	PEGASUS 60.21
Hydraulic pump type	Gear pump for power steering and movements	Gear pump for power steering and movements	Variable displacement pump with Load Sensing for power steering and movements	Variable displacement pump with Load Sensing for power steering and movements. Gear pump for auxiliary services	Variable displacement pump with Load Sensing for power steering and movements	Variable displacement pump with Load Sensing for power steering and movements. Gear pump for auxiliary services	Variable displacement pump with Load Sensing for power steering and movements. Gear pump for auxiliary services
Hydraulic pump capacity	120 L/min (31,7 gal/min)	120 L/min (31,7 gal/min)	290 L/min (76,6 gal/min)	190 L/min (50,2 gal/min)	290 L/min (76,6 gal/min)	190 L/min (50,2 gal/min)	190 L/min (50,2 gal/min)
Max. operating pressure	24,0 MPa (3481 psi)	24,0 MPa (3481 psi)	30,0 MPa (4351 psi)	30,0 MPa (4351 psi)	30,0 MPa (4351 psi)	30,0 MPa (4351 psi)	30,0 MPa (4351 psi)
Distributor control	Proportional 5in1 Joystick	Proportional 5in1 Joystick	Dual proportional Joystick	Proportional 5in1 Joystick	Dual proportional Joystick	Proportional 5in1 Joystick	Proportional 5in1 Joystick
Distributor type	Hydraulic in 5 sections with "Load Sensing" proportional electronic servo-control with "Flow Sharing", 5 simultaneous movements with independent maximum speed control of each movement	Hydraulic in 5 sections with "Load Sensing" proportional electronic servo-control with "Flow Sharing", 5 simultaneous movements with independent maximum speed control of each movement	Hydraulic in 5 sections with "Load Sensing" proportional electronic servo-control with "Flow Sharing", 5 simultaneous movements with independent maximum speed control of each movement	Hydraulic in 5 sections with "Load Sensing" proportional electronic servo-control with "Flow Sharing", 5 simultaneous movements with independent maximum speed control of each movement. Continuous oil function on hydraulic socket	Hydraulic in 5 sections with "Load Sensing" proportional electronic servo-control with "Flow Sharing", 5 simultaneous movements with independent maximum speed control of each movement	Hydraulic in 5 sections with "Load Sensing" proportional electronic servo-control with "Flow Sharing", 5 simultaneous movements with independent maximum speed control of each movement. Continuous oil function on hydraulic socket	Hydraulic in 5 sections with "Load Sensing" proportional electronic servo-control with "Flow Sharing", 5 simultaneous movements with independent maximum speed control of each movement. Continuous oil function on hydraulic socket

TRANSMISSION

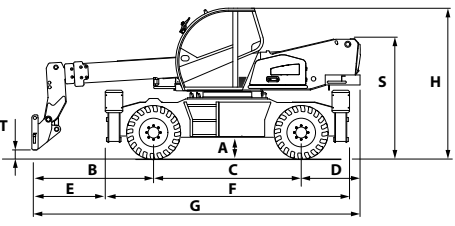
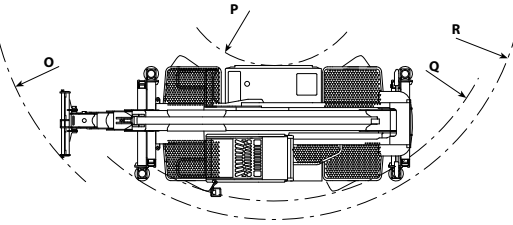
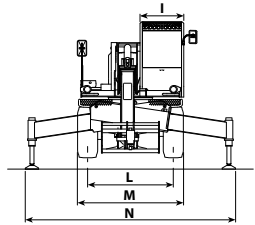
Vehicle model	PEGASUS 40.16 - 400°	PEGASUS 40.18 - 400°	PEGASUS 45.30	PEGASUS 50.25	PEGASUS 50.26	PEGASUS 60.16	PEGASUS 60.21
Transmission type	Hydrostatic with variable displacement pump	Hydrostatic with variable displacement pump	Hydrostatic with continuous adjustment and electronic control	Hydrostatic with variable displacement pump	Hydrostatic with electronic control with variable displacement pump and ECO function	Hydrostatic with variable displacement pump	Hydrostatic with variable displacement pump
Hydraulic motor	Hydrostatic with continuous automatic adjustment	Hydrostatic with continuous automatic adjustment	Hydrostatic with continuous automatic adjustment	Hydrostatic with continuous automatic adjustment	Hydrostatic with continuous automatic adjustment	Hydrostatic with continuous automatic adjustment	Hydrostatic with continuous automatic adjustment
Reversal	Electric and hydraulic systems operated with vehicle in motion	Electro-Hydraulic operated with vehicle in motion	Electrohydraulic	Electro-hydraulic operated with vehicle in motion	With electronic control operated with vehicle in motion	Electro-Hydraulic operated with vehicle in motion	Electro-hydraulic operated with vehicle in motion
Inching	With pedal for controlled forward movement	With pedal for controlled forward movement	With electronic pedal for controlled forward movement	With electronic pedal for controlled forward movement	With electronic pedal for controlled forward movement	With electronic pedal for controlled forward movement	With electronic pedal for controlled forward movement
Transmission gearbox	Servo-controlled 2-speed	Servo-controlled 2-speed	Servocontrolled 2-speed	Servo-controlled 2-speed	Servo-controlled 2-speed	Servo-controlled 2-speed	Servo-controlled 2-speed

DIMENSIONS

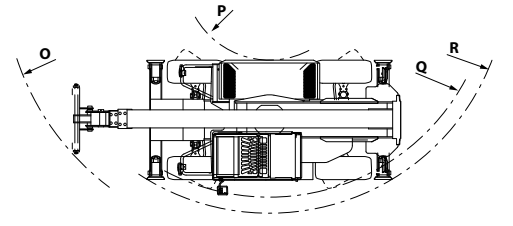
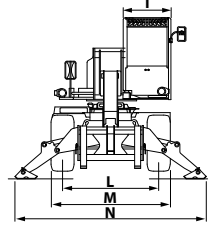
	PEGASUS 40.16 - 400°	PEGASUS 40.18 - 400°	PEGASUS 45.30	PEGASUS 50.25	PEGASUS 50.26	PEGASUS 60.16	PEGASUS 60.21
A	310 mm (12,2 in)	310 mm (12,2 in)	420 mm (16,5 in)	360 mm (14,2 in)	420 mm (16,5 in)	360 mm (14,2 in)	360 mm (14,2 in)
B	2430 mm (95,7 in)	2280 mm (89,8 in)	3230 mm (127,2 in)	3410 mm (134,3 in)	3239 mm (127,5 in)	2657 mm (104,6 in)	2835 mm (111,6 in)
C	2950 mm (116,1 in)	2950 mm (116,1 in)	3300 mm (129,9 in)	2950 mm (116,1 in)	3240 mm (127,6 in)	2950 mm (116,1 in)	2950 mm (116,1 in)
D	1175 mm (46,3 in)	1175 mm (46,3 in)	1870 mm (73,6 in)	1640 mm (64,6 in)	1870 mm (73,6 in)	1364 mm (53,7 in)	1365 mm (53,7 in)
E	1490 mm (58,7 in)	1330 mm (52,4 in)	1955 mm (77 in)	2240 mm (88,2 in)	1370 mm (53,9 in)	1486 mm (58,5 in)	1665 mm (65,6 in)
F	4880 mm (192,1 in)	4880 mm (192,1 in)	6455 mm (254,1 in)	5290 mm (208,3 in)	6455 mm (254,1 in)	5290 mm (208,3 in)	5290 mm (208,3 in)
G	6740 mm (265,4 in)	6630 mm (261 in)	8400 mm (330,7 in)	8000 mm (315 in)	8409 mm (331,1 in)	6970 mm (274,4 in)	7150 mm (281,5 in)
H	3030 mm (119,3 in)	3030 mm (119,3 in)	3095 mm (121,9 in)	3030 mm (119,3 in)	3095 mm (121,9 in)	3030 mm (119,3 in)	3030 mm (119,3 in)
I	980 mm (38,6 in)	980 mm (38,6 in)	980 mm (38,6 in)	980 mm (38,6 in)	980 mm (38,6 in)	980 mm (38,6 in)	980 mm (38,6 in)
L	1920 mm (75,6 in)	1920 mm (75,6 in)	2000 mm (78,7 in)	1920 mm (75,6 in)	2000 mm (78,7 in)	1920 mm (75,6 in)	1920 mm (75,6 in)
M	2380 mm (93,7 in)	2380 mm (93,7 in)	2500 mm (98,4 in)	2380 mm (93,7 in)	2500 mm (98,4 in)	2380 mm (93,7 in)	2380 mm (93,7 in)
N	3968 mm (156,2 in)	3968 mm (156,2 in)	5625 mm (221,5 in)	5070 mm (199,6 in)	5625 mm (221,5 in)	5070 mm (199,6 in)	5070 mm (199,6 in)
O	5163 mm (203,3 in)	5163 mm (203,3 in)	5960 mm (234,6 in)	6000 mm (236,2 in)	5360 mm (211 in)	5489 mm (216,1 in)	5630 mm (221,7 in)
P	1700 mm (66,9 in)	1700 mm (66,9 in)	1535 mm (60,4 in)	1700 mm (66,9 in)	1535 mm (60,4 in)	1700 mm (66,9 in)	1700 mm (66,9 in)
Q	4430 mm (174,4 in)	4430 mm (174,4 in)	4400 mm (173,2 in)	4430 mm (174,4 in)	4400 mm (173,2 in)	4430 mm (174,4 in)	4430 mm (174,4 in)
R	4750 mm (187 in)	4750 mm (187 in)	4915 mm (193,5 in)	4790 mm (188,6 in)	4915 mm (193,5 in)	4790 mm (188,6 in)	4790 mm (188,6 in)
S	2420 mm (95,3 in)	2420 mm (95,3 in)	2752 mm (108,3 in)	2651 mm (104,4 in)	2752 mm (108,3 in)	2581 mm (101,6 in)	2556 mm (100,6 in)
T	200 mm (7,9 in)	140 mm (5,5 in)	90 mm (3,5 in)	85 mm (3,3 in)	131 mm (5,2 in)	124 mm (4,9 in)	119 mm (4,7 in)

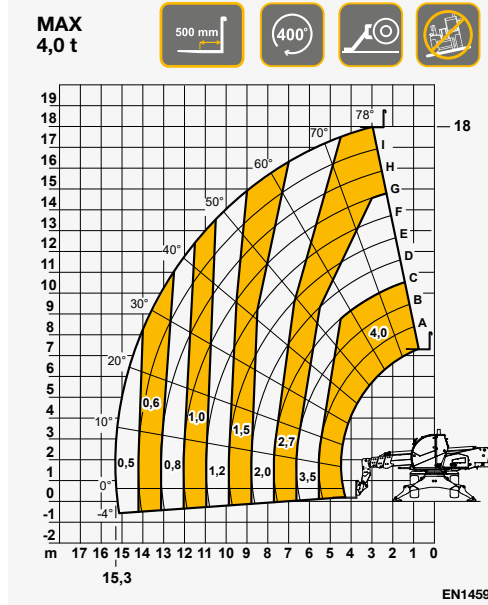


45.30 | 50.25 | 50.26 | 60.16 | 60.21

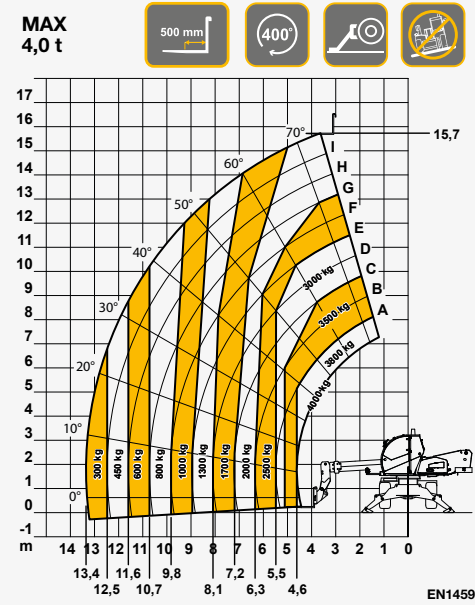


40.16 | 40.18

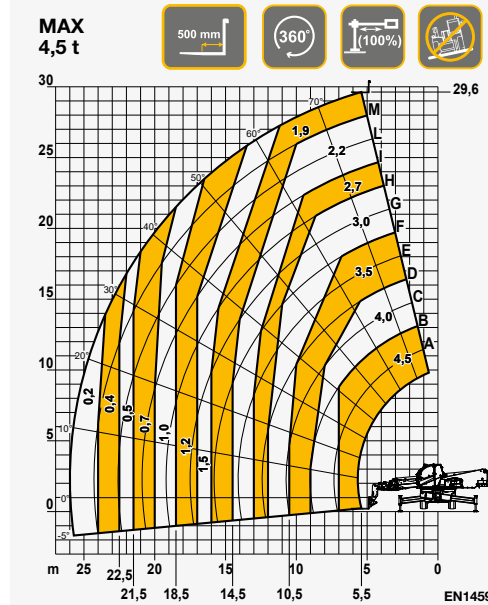




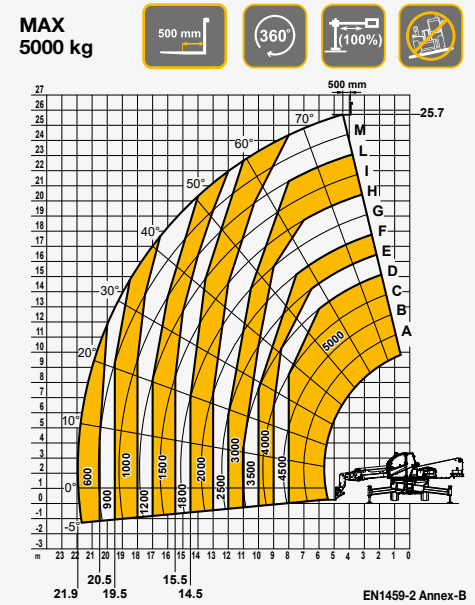
40.IB - 400°



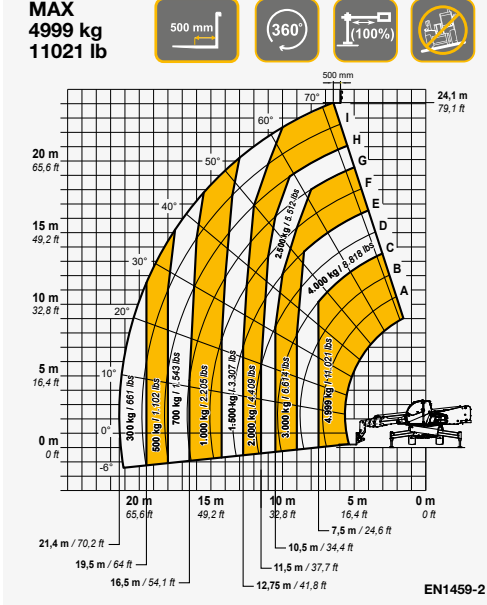
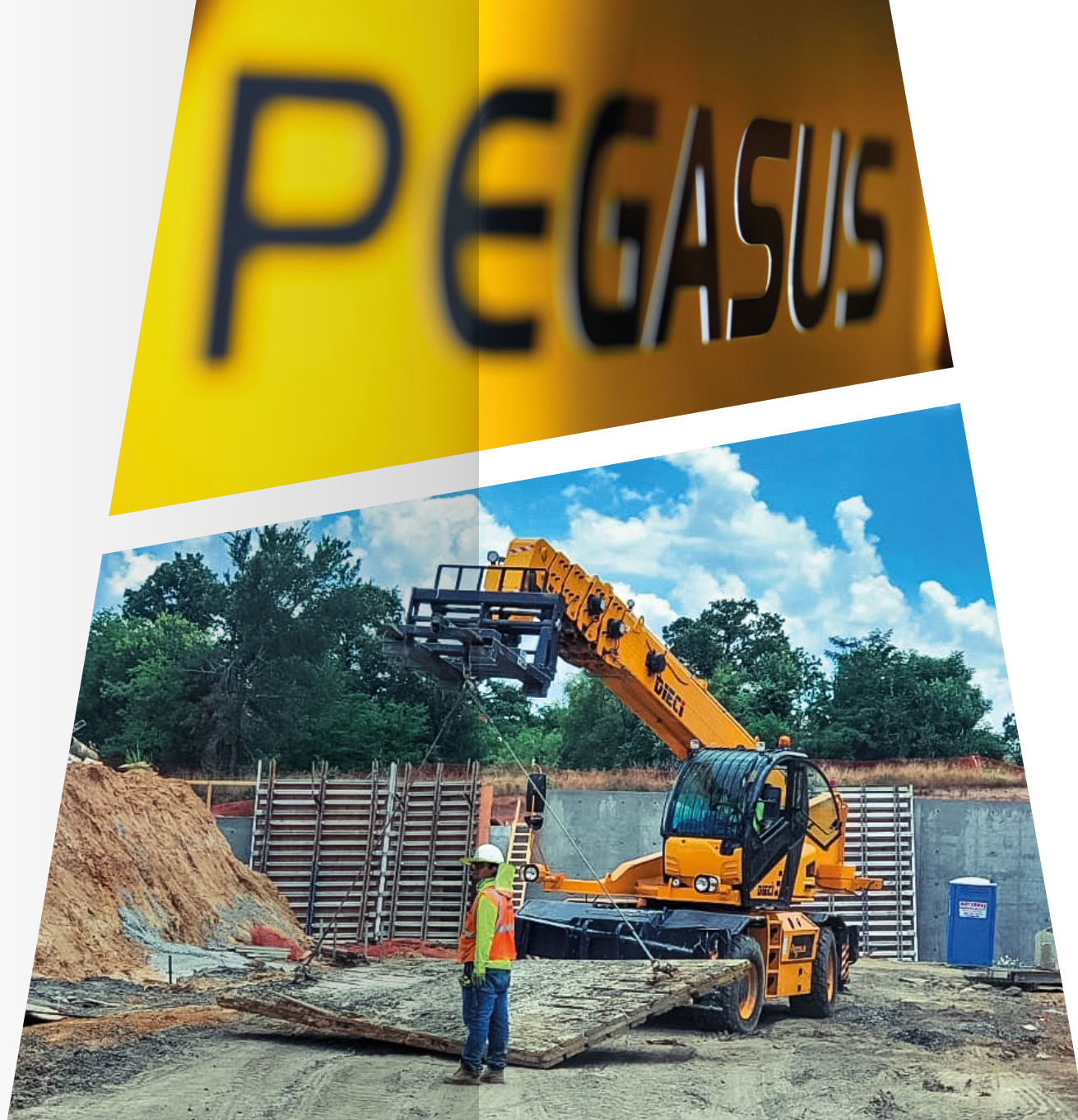
40.I6 - 400°



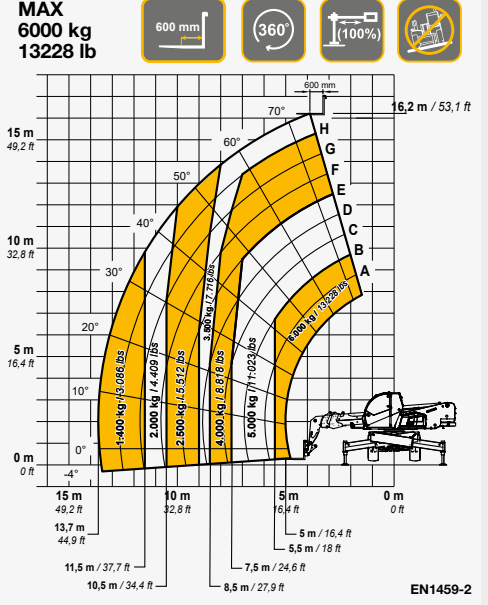
45.30



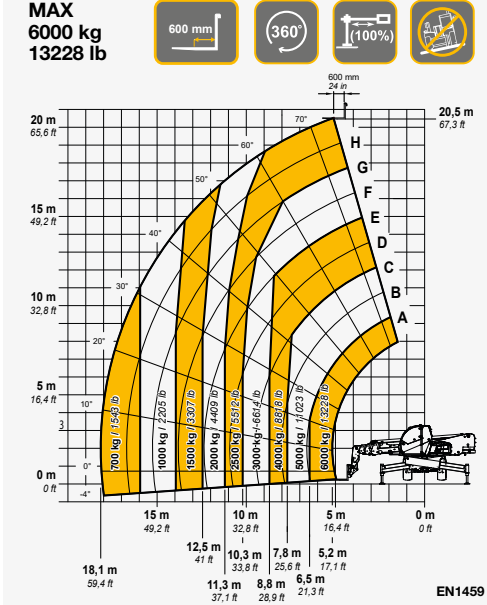
50.26



50.25



60.I6



60.21

DIECI SERVICE

ASSISTANCE SERVICE ALWAYS AND EVERYWHERE

General headquarters in Emilia Romagna - over 135,000 square meters and about 400 people employed - and 3 branches in Germany, United Kingdom, France: Dieci is present in over 70 Countries with **an extensive network of over 400 dealers** and authorized service centers.

Dieci Service, our global technical assistance service, is developed on this basis: our customers are assisted directly by specialized technicians and every request is satisfied in a very short time. Dieci Service, **within a few hours, can provide interventions and spare parts all over the world.**

Visit www.dieci.com to find the dealer closest to you.

400 **DEALERS**

70 **COUNTRIES**

3 **BRANCHES**



PEGASUS

40.16 / 40.18 / 50.25 / 60.16 / 60.21 / 45.30 / 50.26

DIECI

www.dieci.com

